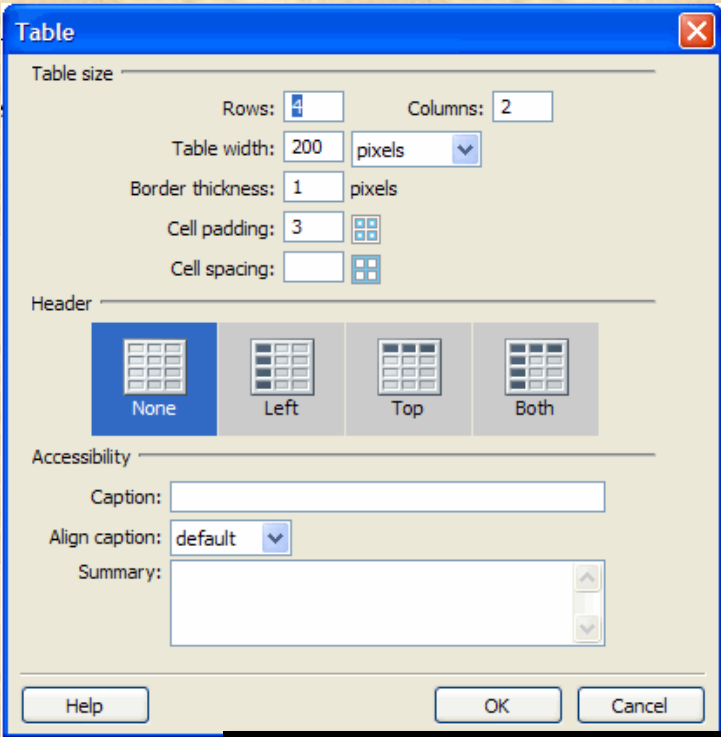
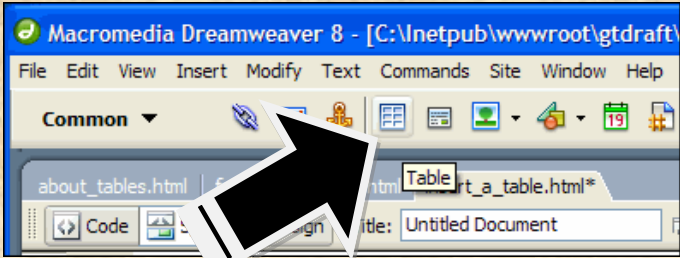


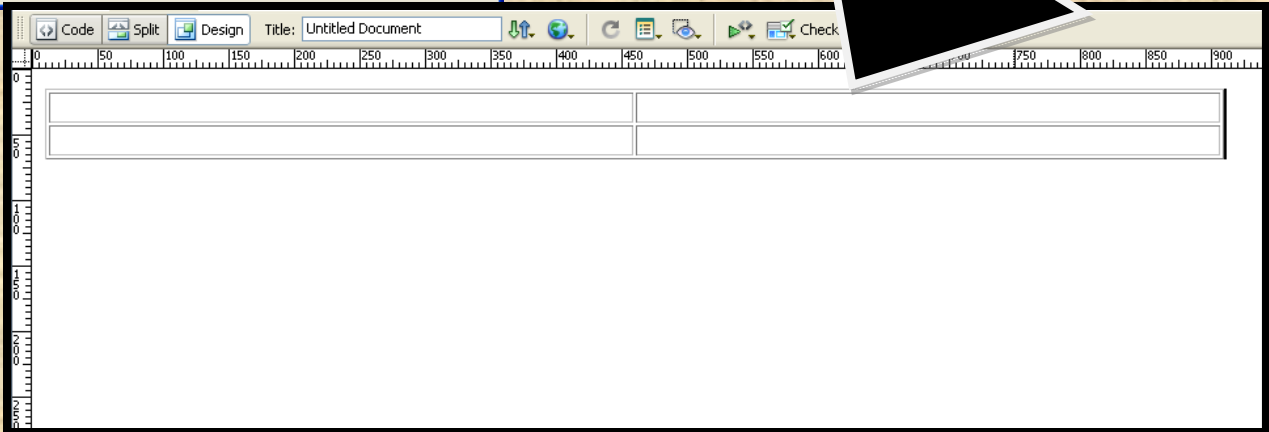
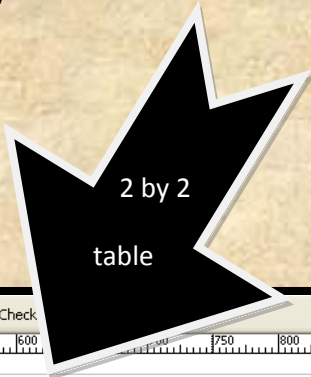
Inserting tables with Dreamweaver CS3

Tables provide an easy method of organizing information on a web page. Tables typically consist of one or more rows and one or more columns. Each rectangular area at the intersection of a row and a column is called a cell. Cells contain the page's text or graphics. You can insert a table anywhere on a page even within another table. These are called nested tables.

Move your text cursor to the location on the page where you wish to insert the table. One way to do this is to simply click the spot where you want the table to appear. This will cause your text cursor to move to that place. To insert a table click on the Common tab if needed then locate the Insert Table button.

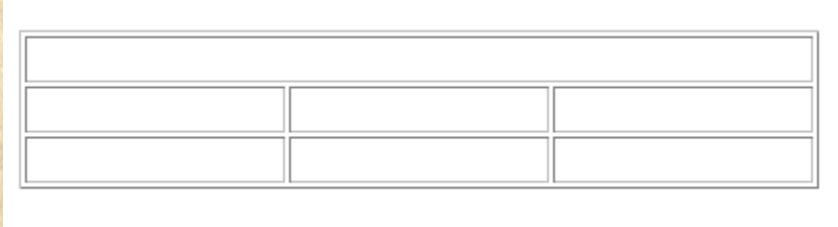


The Insert Table Dialog Box appears. You can navigate from box to box by using the Tab key. Complete the dialog box by telling Dreamweaver how many rows and columns you want in your table. In the Table Width text box, enter a number that will either be in pixels or a percentage of the page width; and then choose the units from the pop-up menu to the right of the text box. The pixels will change when you start inserting graphics into your table if they need to.



Merging cells in tables

Cells can be merged together to provide a larger single cell. The table below was originally three columns and three rows. The three cells in the upper right corner were merged to form one larger cell. You can merge any number of cells that are next to each other as long as the entire selection is a line or a rectangle of cells to produce a single cell that spans several rows or columns.



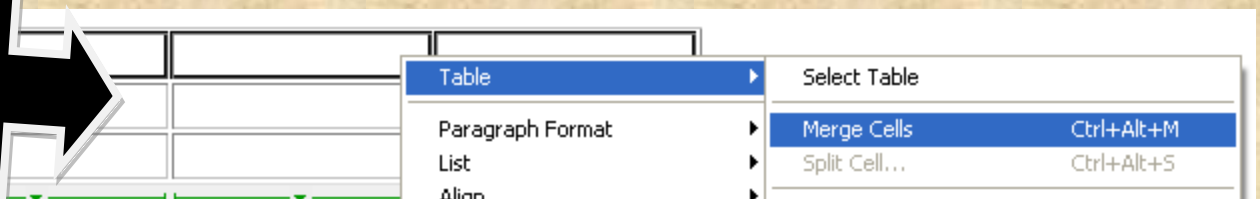
Original 3 by 3 table



Select the three cells along the top row

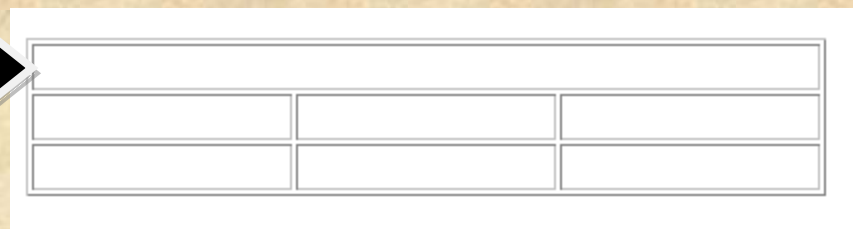


Right-click the top row, then choose Table, Merge Cells. You should see one long row.



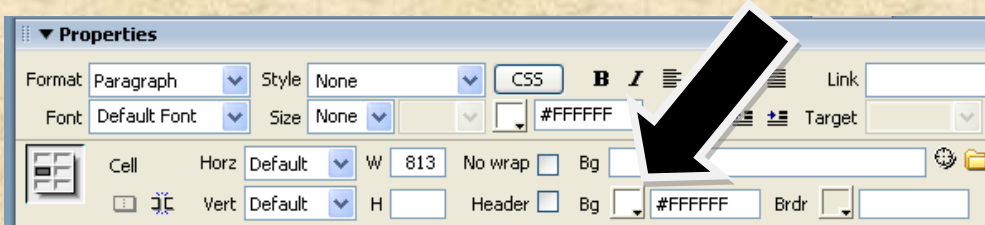
- Table
 - Select Table
 - Merge Cells** Ctrl+Alt+M
 - Split Cell... Ctrl+Alt+S
- Paragraph Format
- List
- Align

Merged cells along the top row now.

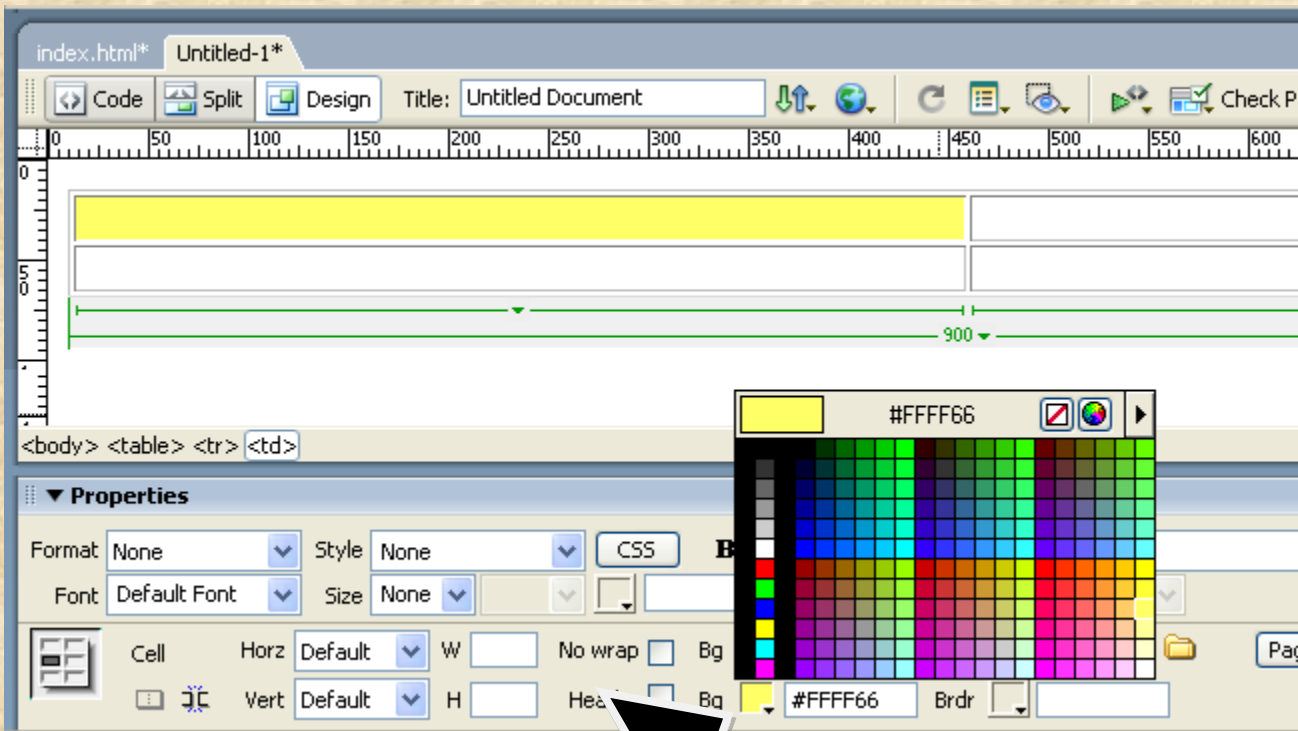


Adding Color to the Background in a Cell

- With a table selected, the Properties window can be expanded to the view you see below. Cell properties are changed in the bottom of the window. To the right of Header is Bg followed by a gray box with a down arrow. Click anywhere in that box for a color palette. Dreamweaver displays the color and changes the color of that cell only. One step further to the right is a Brdr box. Dreamweaver will place a colored border around the inside of the table cell.



Click inside the cell, then click the Bg box with the down arrow to choose a color from the palette. Only the cell you clicked on will change.



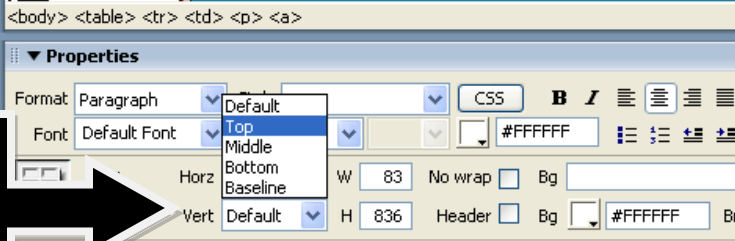
Moving images or text to the top of the cell

You'll notice that sometimes the images you insert into a table or the text stays in the middle of a cell instead of moving to the top of the table.



1. This text would look better lined up along the top of the cell

2. Click inside the cell then Change "Default" to "Top" next to Vert



3. The text or images will now line up along the top of the cell.

