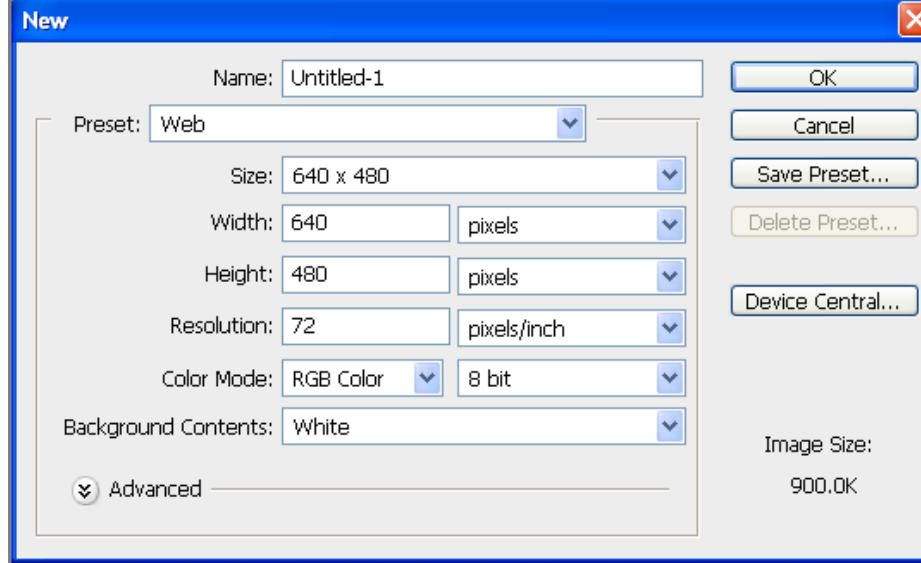




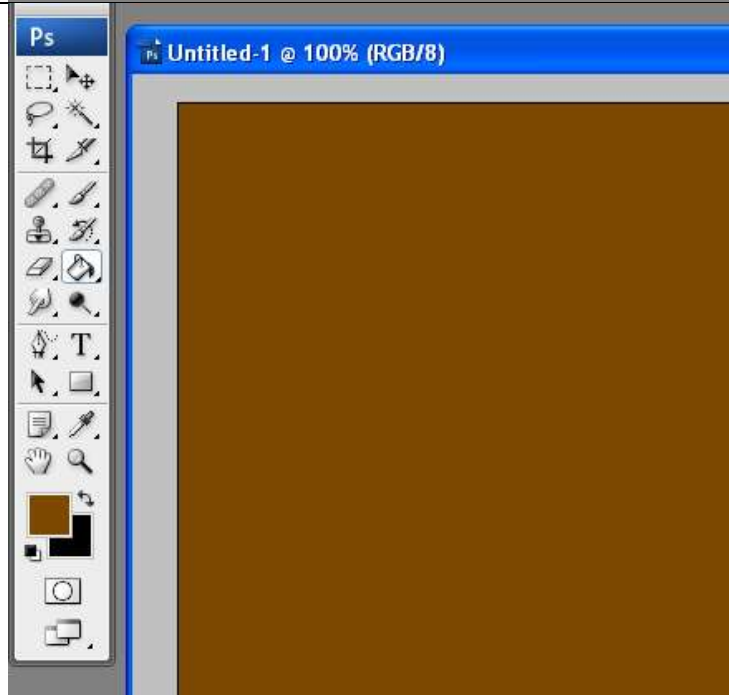
# Zombie Text Effect

In this tutorial you will learn how to create a *Zombie Text* effect that works great for Halloween flyer's, pamphlets and forum signatures. The steps to create this effect are relatively easy to accomplish with a little time and effort. Follow this tutorial as closely as you can! You will be submitting 2 images, the tutorial and then your own name.

**Step 1.** Open a new canvas using the Web preset. This will appear as a 640 pixel by 480 pixel image.

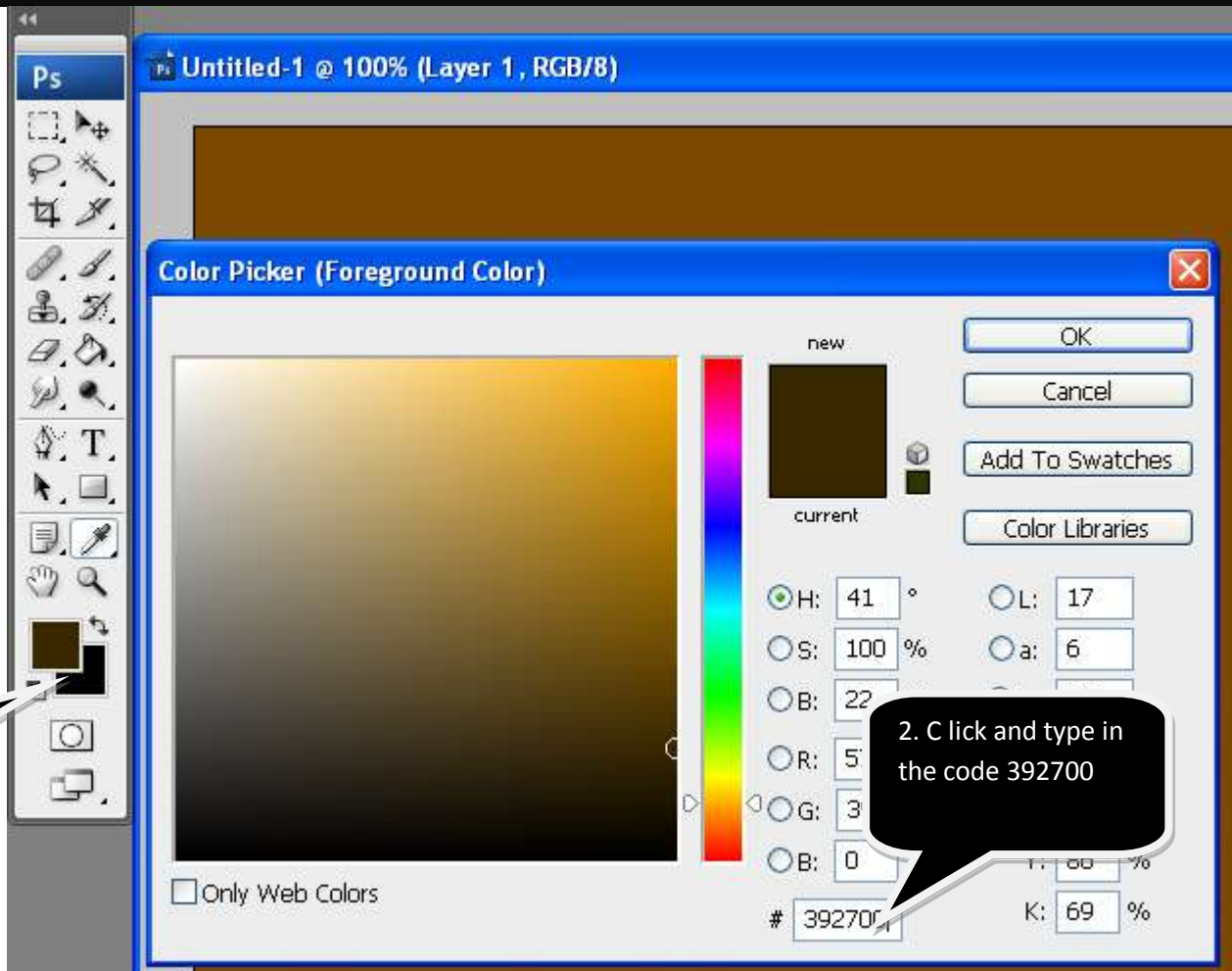


**Step 2.** Fill the background with your desired color using the paint bucket, something brown or tan looking would work fine.



**Step 3.** Press Ctrl + Alt + Shift + N on your keyboard to create a new layer. Click in the color box and set your foreground color to: #392700. Click OK when you are finished.

1. Click to bring up the color picker.



2. Click and type in the code 392700

**Step 4.** Go ahead and get out the Text Tool and select a spooky-looking font. Here I'm using a font called Zombie Guts, you probably don't have it on your computer so look through the fonts and look for a spooky looking one. Here are the exact Text settings I've used:



**Step 5.** Type the word "Zombie" and place it near the center of your canvas.



**Step 6.** Double click this layer, and apply the following layer styles:

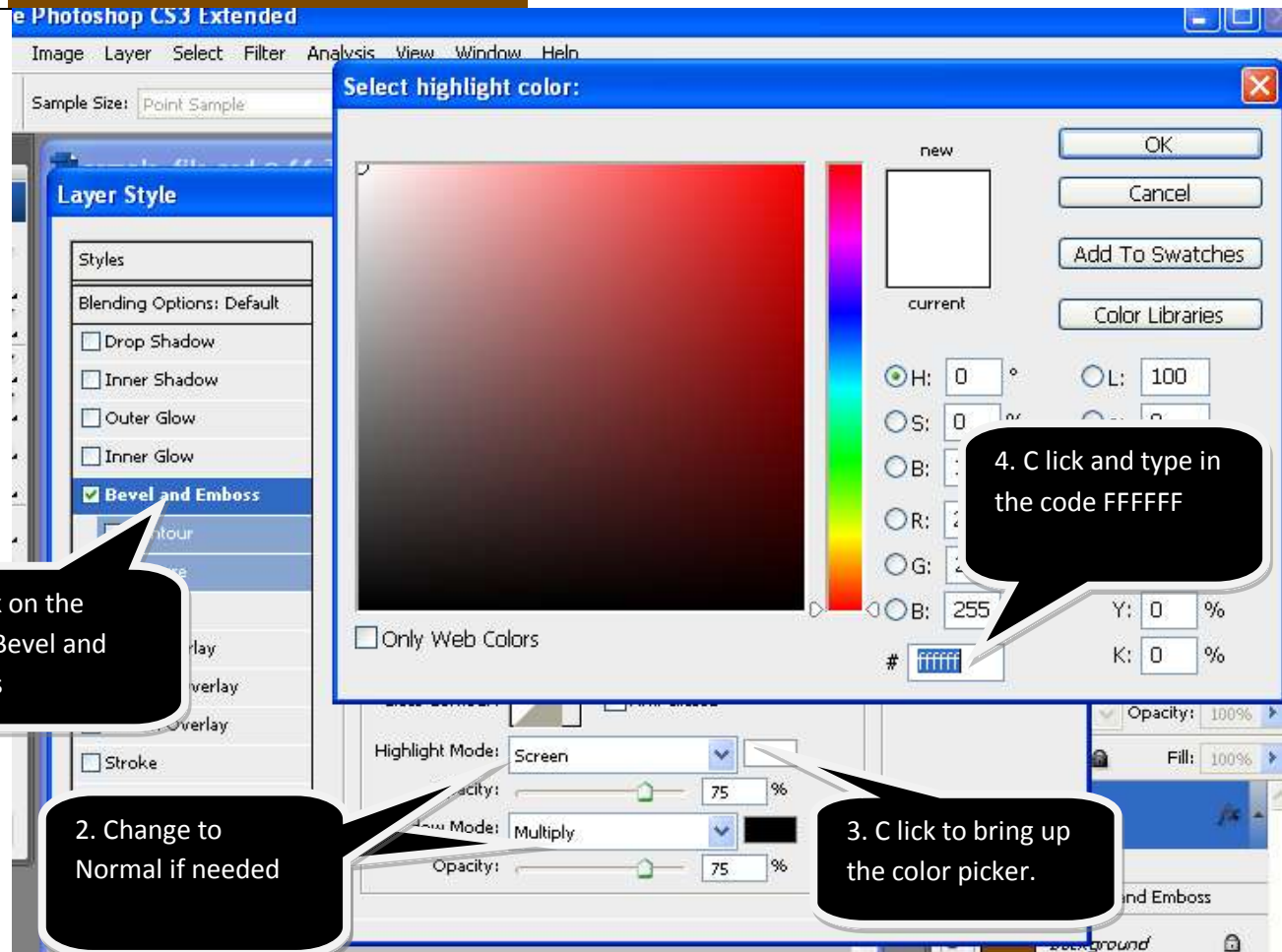
Click on **Bevel & Emboss**. Click to change the color in Highlight Mode to #FFFFFF. Click OK when you are finished.

1. Click on the words Bevel and Emboss

2. Change to Normal if needed

3. Click to bring up the color picker.

4. Click and type in the code FFFFFFFF



**Step 6.** Click in the Shadow Mode color box and change the color to #421700

**Layer Style**

Styles

Blending Options: Default

- Drop Shadow
- Inner Shadow
- Outer Glow
- Inner Glow
- Bevel and Emboss**
  - Contour
  - Texture
- Satin**
- Color Overlay
- Gradient Overlay
- Pattern Overlay
- Stroke**

Opacity: 100 %

Shadow Mode: Multiply

Opacity: 75 %

**Select shadow color:**

new

current

OK

Cancel

Add To Swatches

Color Libraries

H: 21 ° L: 15

S: 100 %

B: 0

G: 0

B: 0

# 421700

Y: 84 %

K: 71 %

Only Web Colors

1. Click to bring up the color picker.

2. Change to Normal

3. Click and type in the code 421700

**Step 7.** Click on the word **Satin**. Click the color box to change the color in Blend Mode to # B58F3E. Change the Distance and Size also.

Click OK when you are finished.

1.C lick on the word Satin

**Layer Style**

Styles

Blending Options: Default

- Drop Shadow
- Inner Shadow
- Outer Glow
- Inner Glow
- Bevel and Emboss
- Contour
- Texture
- Satin**
- Color Overlay
- Gradient Overlay
- Pattern Overlay
- Stroke

**Satin**

Structure

Blend Mode: Normal

Opacity: 66 %

Angle: 19 °

Distance: 14 px

Size: 13 px

Contour:  Anti-aliased  Invert

**Select satin color:**

new

current

H: 41 ° S: 66 % B: 71 R: 16 G: 14 B: 62

L: 62 a: 8

# b58f3e

Y: 90 % K: 5 %

OK Cancel Add To Swatches Color Libraries

Only Web Colors

2.C lick to bring up the color picker.

3.C lick and type in the code B58F3E

**Step 8.** Click on the word **Stroke**. Click the color box to change the color #D0AD60. Click OK when you are finished.

The image shows the Photoshop Layer Style dialog box for a layer. The 'Stroke' checkbox is checked and highlighted in blue. A callout bubble points to it with the text '1.C lick on the word Stroke'. Below the 'Stroke' checkbox, the 'Structure' section is visible, showing 'Size: 3 px', 'Position: Inside', 'Blend Mode: Normal', and 'Opacity: 100 %'. A callout bubble points to the 'Color' box in the 'Fill Type: Color' section with the text '2.C lick to bring up the color picker.'. The 'Select stroke color:' dialog box is open, showing a color picker with a gradient bar and a color swatch. A callout bubble points to the text input field at the bottom of the dialog, which contains '# d0ad60', with the text '3.C lick and type in the code D0AD60'. The 'new' color swatch is currently a light brown color.

Layer Style

Styles

Blending Options: Default

- Drop Shadow
- Inner Shadow
- Outer Glow
- Inner Glow
- Bevel and Emboss
- Contour
- Texture
- Satin
- Color Overlay
- Gradient Overlay
- Pattern Overlay
- Stroke

Stroke

Structure

Size: 3 px

Position: Inside

Blend Mode: Normal

Opacity: 100 %

Fill Type: Color

Color: [Color Box]

Select stroke color:

new

current

H: 41 ° L: 73

S: 54 % a: 6

B: 96 Y: 73 %

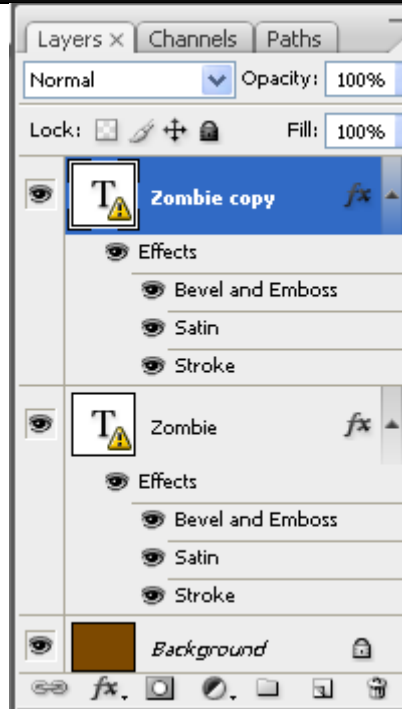
# d0ad60 K: 1 %

1.C lick on the word Stroke

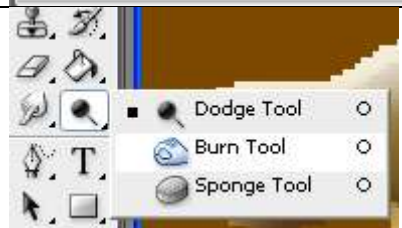
2.C lick to bring up the color picker.

3.C lick and type in the code D0AD60

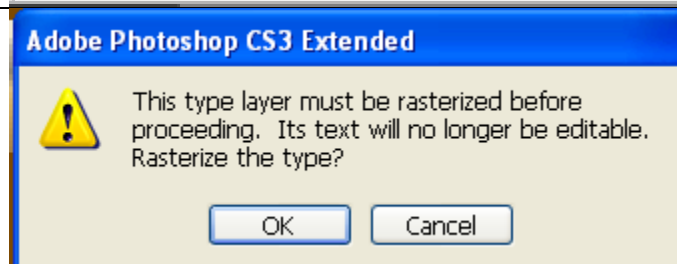
**Step 9.** Press Ctrl + J on your keyboard to duplicate the Zombie layer.



**Step 10.** Select the Burn Tool and apply the following settings:



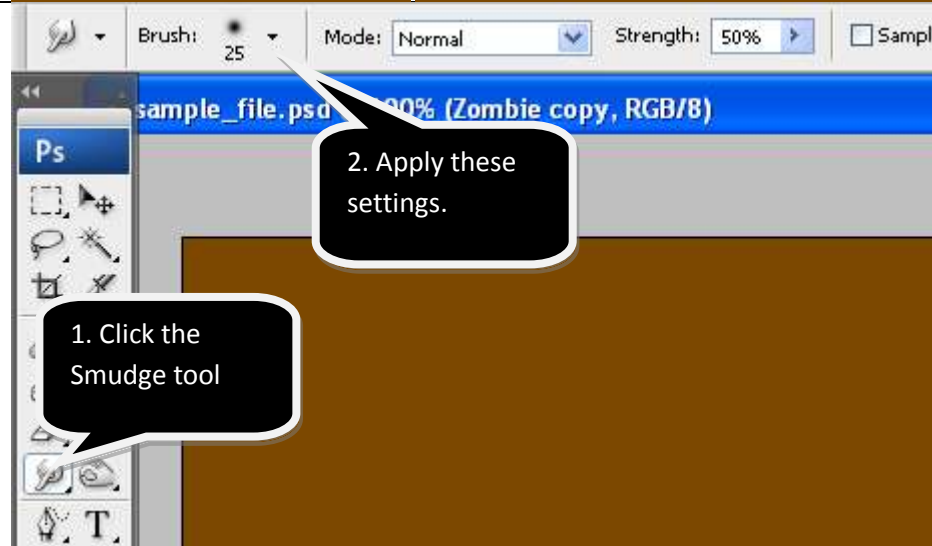
**Step 11.** Click OK when you see this message.



**Step 12.** Randomly brush around the text to create various dots and squiggly lines as shown. Too light? Click more than once and re-draw the lines to make them darker.



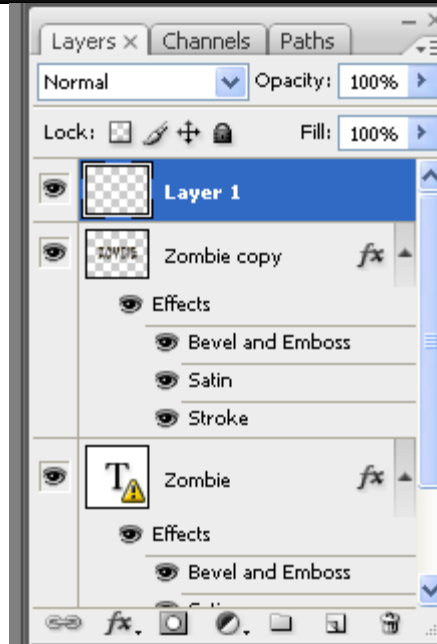
**Step 13.** Get out the Smudge Tool and apply settings to start with.



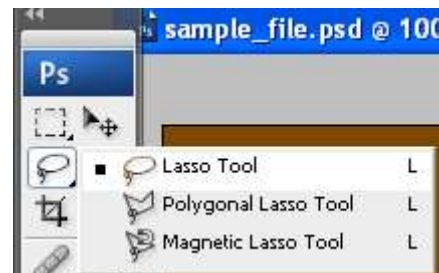
**Step 14.** Now drag your mouse along the bottom part of each letter using the smudge tool until you have something similar to what I have here.



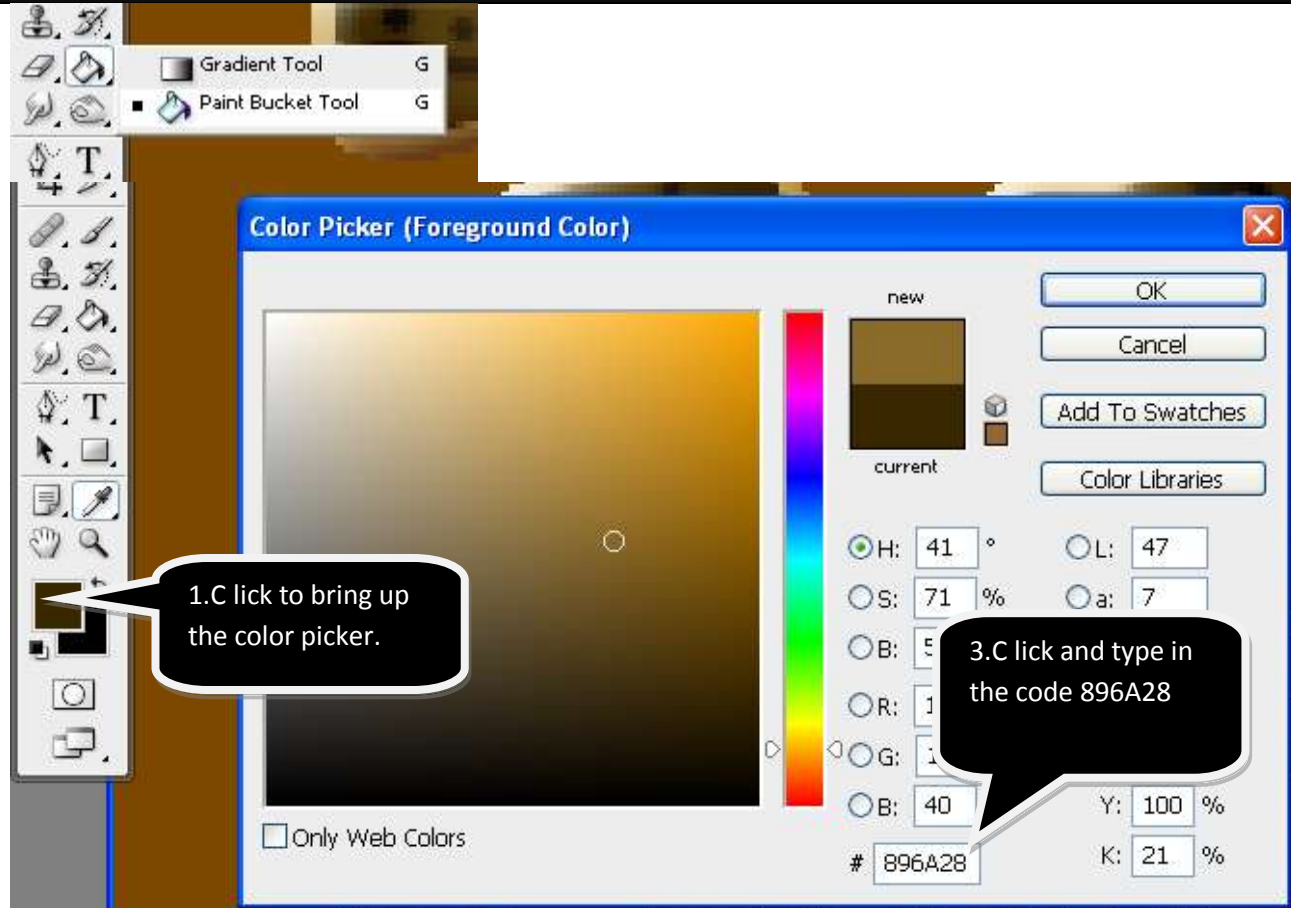
**Step 15.** Press Ctrl + Alt + Shift + N on your keyboard to create a new layer.



**Step 16.** Get out the Lasso Tool and make a selection as I have done here. Just draw a squiggly looking line and make sure both lines meet:



**Step 17.** Now that you have the paint bucket click in the foreground box to bring up the color picker. Type in the code #896A28.



**Step 18.** Now click inside your selection with the paint bucket to fill it in.



**Step 19.** Double click this layer, and apply the following layer style options:

Click on **Bevel and Emboss** and match the settings to the right.

The screenshot shows the Photoshop 'Layer Style' dialog box for the 'Bevel and Emboss' layer style. The 'Structure' section is expanded, showing the following settings: Style: Pillow Emboss, Technique: Smooth, Depth: 181%, Direction: Up, Size: 3 px, and Soften: 0 px. The 'Shading' section is also visible, with Angle: 120°, Altitude: 30°, and both Highlight and Shadow modes set to 75% opacity. Three callout boxes provide instructions: '1. Double click this layer' points to the layer name in the Layers panel; '2. Click on the words Bevel and Emboss' points to the 'Bevel and Emboss' checkbox in the Layer Style list; and '3. Match the settings. Depth 181' points to the Depth slider. The Layers panel on the right shows 'Layer 1' selected, with 'Zombie copy' and 'Zombie' layers below it. The 'Effects' list for 'Layer 1' includes 'Bevel and Emboss', 'Satin', and 'Stroke'.

2. Click on the words Bevel and Emboss

3. Match the settings.  
Depth 181

1. Double click this layer

**Layer Style**

**Bevel and Emboss**

**Structure**

Style: Pillow Emboss

Technique: Smooth

Depth: 181 %

Direction: Up Down

Size: 3 px

Soften: 0 px

**Shading**

Angle: 120 °

Altitude: 30 °

Gloss Contour: Anti-aliased

Highlight Mode: Screen

Opacity: 75 %

Shadow Mode: Multiply

Opacity: 75 %

New Style... Preview

Layer 1

Zombie copy

Zombie

Effects

Bevel and Emboss

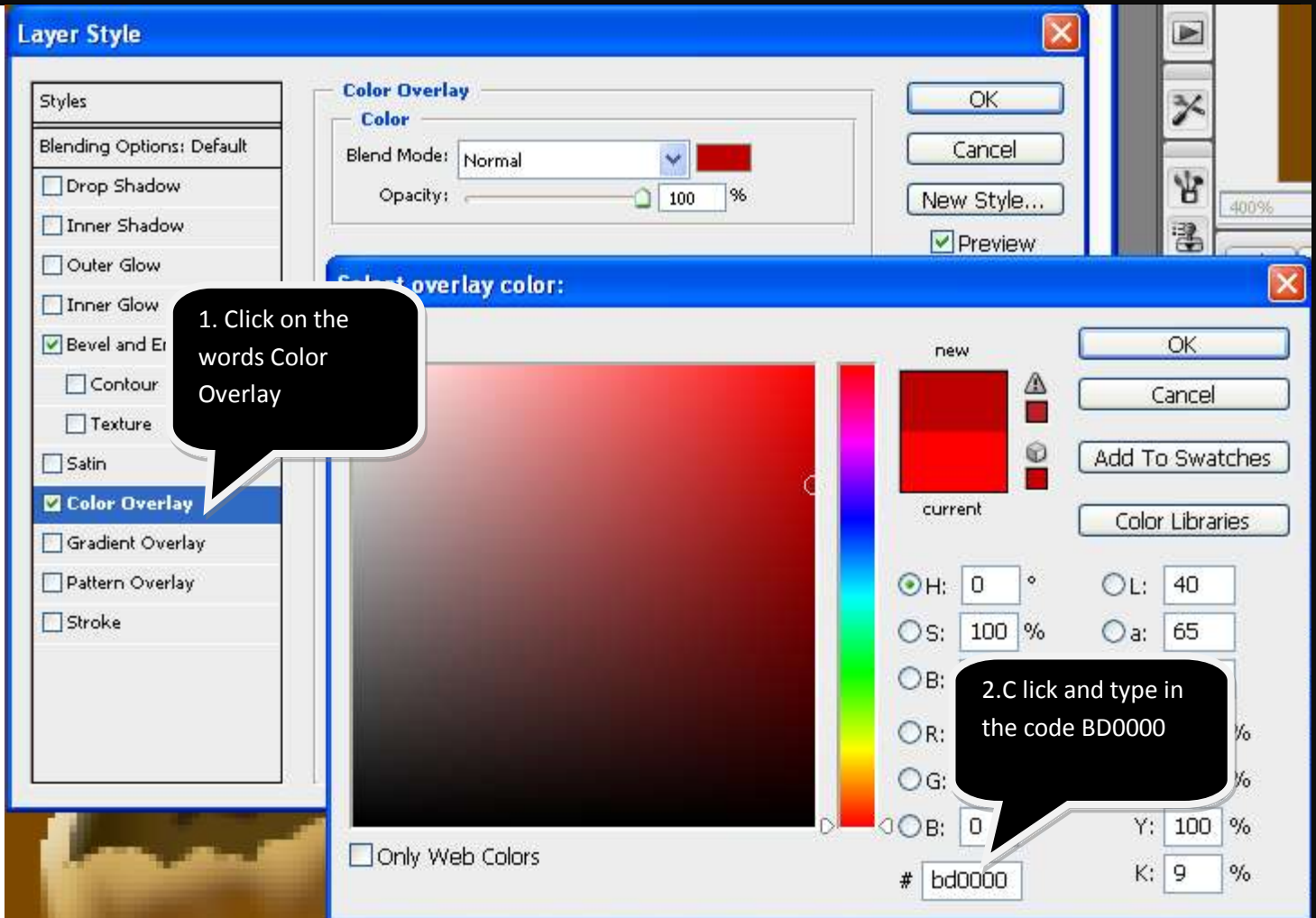
Satin

Stroke

Effects

Bevel and Emboss

**Step 19.** Click on Color Overlay and type in the color code BD0000



**Step 20.** It should look like this now. Press Ctrl+D to deselect and get rid of the selection outline.



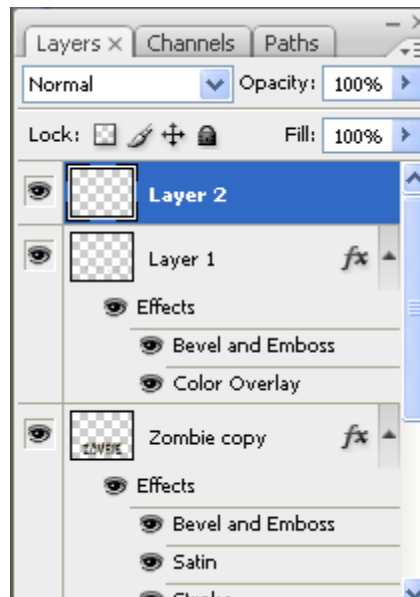
**Step 21.** Now create another selection with the Lasso Tool. Fill it in with the Paint Bucket. The fill should have the same layer style applied to it like the previous fill.

Add more “cuts” to your letters. You should create many different selections in each letter of your text:



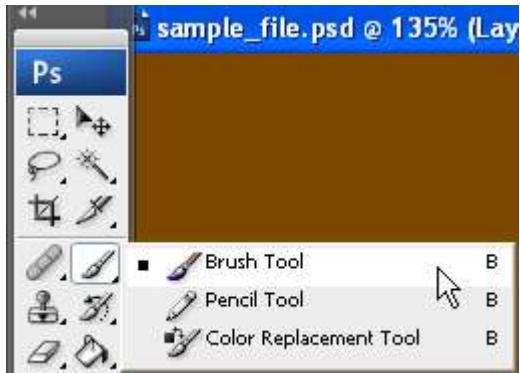
**Step 21.** Press Ctrl + Alt + Shift + N on your keyboard to create a new layer.

Set your foreground color to black by pressing the “D” key on your keyboard.



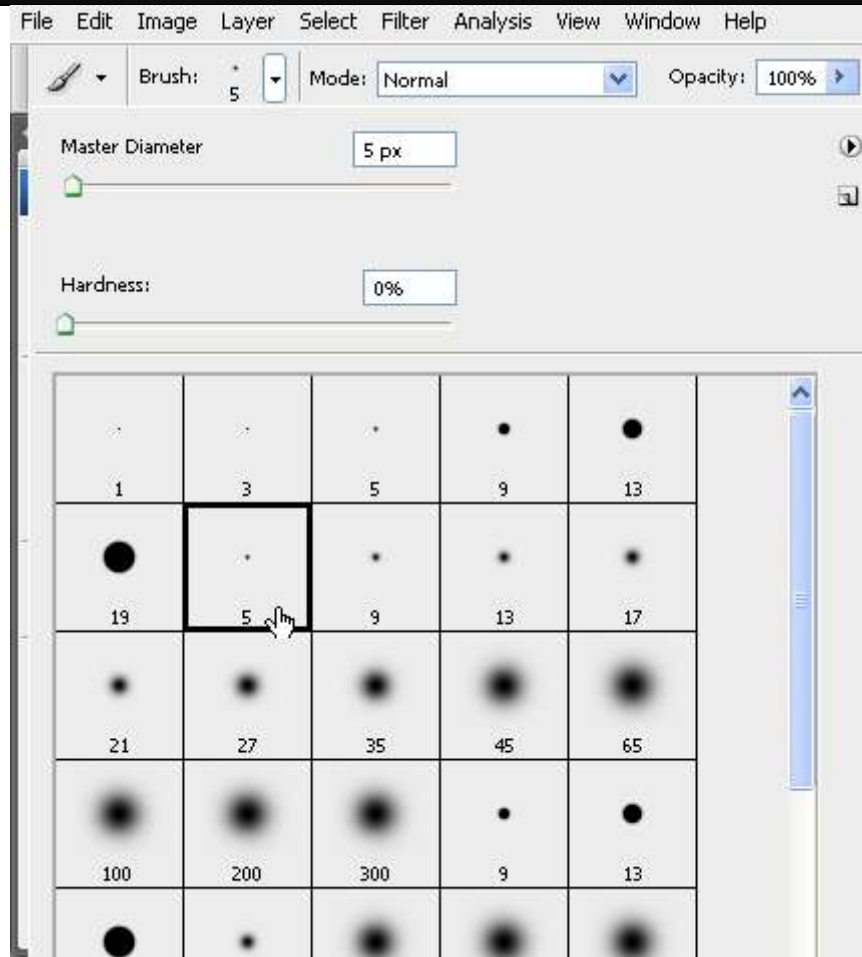
Press “D” to set the foreground color to black.

**Step 22.** Get out the Brush Tool.



Set it up with a round soft 5 pixel brush as I have done here. Remember, if you need the brush smaller you can press [

] If you need the brush larger then press [ ]  
In my case I made the brush smaller to a size 2.



**Step 23.** Now draw lines across each of the "cuts" that we made in previous steps to add the effect of stitches to each letter of our text.



**Step 24.** Here is how my text ended up, as you can see this is a very easy and fun effect to create a very scary looking text effect that works great on all sorts of Halloween related applications:

Here's what I came up with after messing around with the text a little more.



And this is what it looks like after adding some graphics to the background with a few effects

You can add zombies, hands, scary trees, a moon, a cemetery, gravestones, etc....



*Don't forget to rate us on TeachersPayTeachers, PLEASE!*

## Terror Castle

In this project you will take a picture of a Disney castle and turn it into spooky haunted-looking castle.



This project works with Photoshop CS2, CS3, and CS4

Click each picture to view more lessons from us on TeachersPayTeachers.com

Objective: Use Microsoft Excel's formatting features to design a crossword puzzle.

Introduction: Microsoft Excel's column and row layout, along with its formatting features, allows for the creation of unique documents, such as crossword puzzles. You can design crossword puzzles with your favorite topics rather easily.

Instructions: Create a Crossword Puzzle

Step 1: On graph paper, sketch a "rough draft" of a crossword puzzle, with questions and answers, that corresponds with a specific topic of your choice (examples: skateboarding, music, computers, etc.). Choose 10 words you want to include in your crossword puzzle.

### Create a Crossword Puzzle with Microsoft Excel 2007

You should have 10 words

a n t  
o  
s e a l  
a  
v  
r

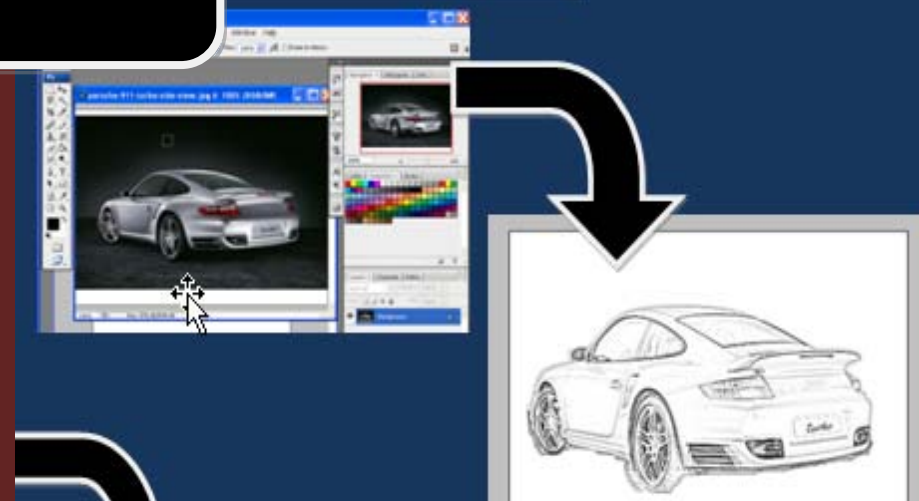
a new worksheet in Excel

## Using the Online Version of the Occupational Outlook Handbook

Hi, I'm Elphy. I'll guide you through this presentation. Like my beats?



2Learncomputing.com



Create coloring pages from images using Photoshop